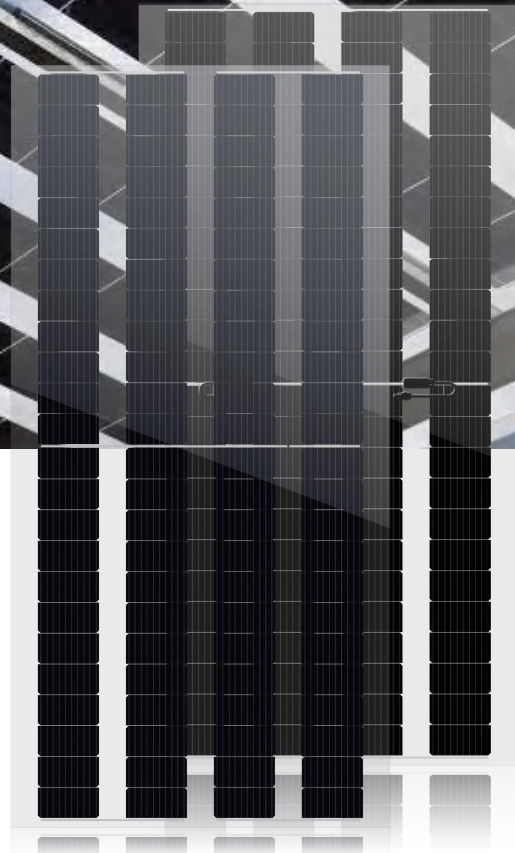


365W MBB

Bifacial Double Glass
Mono PERC Half-cell
Module

S8-96GA 355~365W



Highly transparent double glass design
Lower temperature coefficient
Transmittance up to 40%,(Can be customized according to customer requirements, up to 50%)



Lower LCOE (Levelized Cost Of Energy)



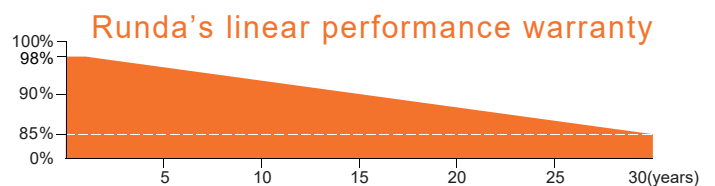
Excellent Potential Induced
Degradation Resistance



Resistant To Environmental Influences



Excellent wind/snow resilience performance



12 Years Product Warranty on Materials and Workmanship

30 Years Linear Performance Warranty

2.00% 1st year Degradation

0.45% Subsequent Annual Degradation



RS355~365S8-96GA

Electrical Characteristics(STC*)

Power Output(Wp)	355	360	365
Max Power Tolerance(W)	0-5	0-5	0-5
Module Efficiency(%)	13.74	13.81	13.87
Voltage Mpp-Vmpp(V)	27.50	27.76	28.01
Current Mpp-Impp(A)	12.91	12.97	13.03
Voltage Open Circuit-Voc(V)	32.96	33.20	33.44
Short Circuit Current-Isc(A)	13.75	13.81	13.87

*STC:Irradiance 1000 W/m²,Cell Temperature 25°C,Air Mass AM1.5

Electrical Characteristics With 10% Rear Side Power Gain

Power Output(Wp)	391	396	402
Voltage Mpp-Vmpp(V)	27.50	27.76	28.01
Current Mpp-Impp(A)	14.20	14.27	14.33
Voltage Open Circuit-Voc(V)	32.96	33.20	33.44
Short Circuit Current-Isc(A)	15.13	15.19	15.26

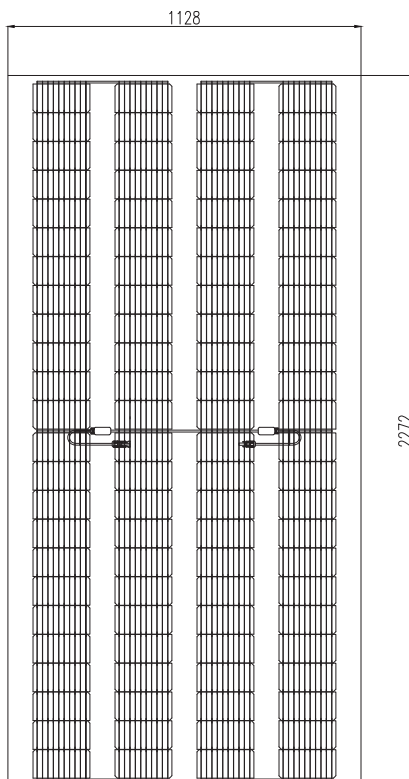
*Rear side power gain:The additional gain from the rear side compared to the power of the front side at the standard test condition.It depends on mounting (structure,height,tilt angle etc.)and albedo of the ground

Electrical Characteristics(NMOT*)

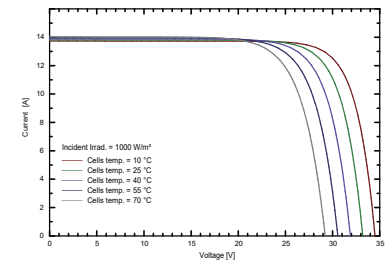
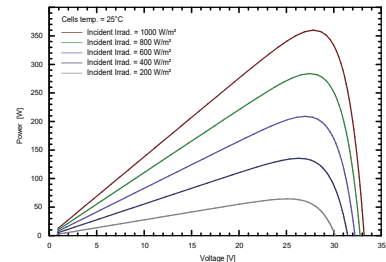
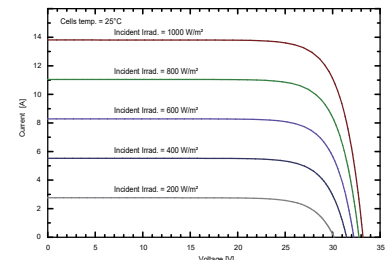
Power Output(Wp)	272	276	280
Voltage Mpp-Vmpp(V)	25.06	25.30	25.53
Current Mpp-Impp(A)	10.88	10.93	10.98
Voltage Open Circuit-Voc(V)	30.43	30.65	30.87
Short Circuit Current-Isc(A)	11.69	11.74	11.79

*NMOT:Irradiance 800 W/m²,Ambient Temperature 20°C,Air Mass AM1.5,Wind Speed 1m/s

Module Structure Drawing



Curves(360W)



Mechanical Data

Dimension Of Module	2278*1134mm
Weight	30.3kg
Front/Back Glass	2.0mm heat strengthened glass
Cables	4mm ² /300mm or Customized Length
Junction Box	IP68
Connector	MC4 compatible

Packaging Configuration

Packing Type	40'HQ
Piece/Pallet	50
Piece/Container	900 pcs

Working Conditions

Max System Voltage(VDC)	1500V
Max Series Fuse Rating	30A
Maximum Load Capacity	Snow 5400Pa/Wind 2400Pa
Operating Temperature	-40°C~+85°C
Safety Class	II
Transmittance	40%

Temperature Ratings

Temperature Coefficients of Isc(%/°C)	0.026
Temperature Coefficients of Voc(%/°C)	-0.272
Temperature Coefficients of Pmpp(%/°C)	-0.353
NMOT	45±2°C